
SPLICE CONNECTORS

Tin-plated copper splice (butt) connectors are used to connect cables of equal cross-sectional area, suitable for all low voltage (LV) applications up to 1000v.

Material:

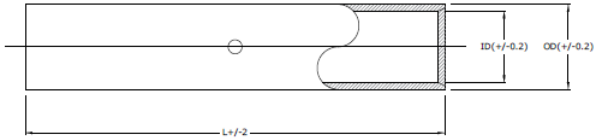
- Copper with Bright-Electro Tinned Plating

Before Installation please check:

- Surface should be free from dents & burr.
- Plating should be smooth & bright finished.
- Connector should be electro-tinned plated (min 5-7 microns).

SPECIFICATION DATA

Batt Part No.	Conductor Size	Dimensions (mm)		
		Inner	Outer	Length
89065	1.5sqmm	1.8	3.7	22
89068	2.5sqmm	2.4	4.0	22
89072	4.0sqmm	3.1	4.8	22
89146	6.0sqmm	3.8	5.5	22
89126	10sqmm	4.7	6.6	22
89073	16sqmm	5.5	7.5	35
89080	25sqmm	7.0	9.0	35
89082	35sqmm	8.2	10.6	38
89083	50sqmm	9.5	11.9	42
89084	70sqmm	11.5	14.5	47
89090	95sqmm	13.5	16.7	47
89101	120sqmm	15.0	19.0	65
89133	150sqmm	16.5	21.0	65
89135	185sqmm	18.5	23.0	67
89136	240sqmm	21.0	26.0	80
89137	300sqmm	23.0	28.0	89
89168	400sqmm	27.0	32.0	100
89300	500sqmm	27.0	36.0	110
89172	630sqmm	35.5	44.7	110



The information in this datasheet is for guidance only and subject to change without liability. Images provided are representations; actual cable dimensions may vary due to manufacturing tolerances.

www.battcables.com | 01322 441165

©2024 Batt Cables Limited

