

## SATURN STAINLESS STEEL QUAD CLEATS WITH LSF LINER

CMP Saturn Stainless Steel Quad Cleats with LSF Liner for use with 4 x cable cleating solutions.

The Saturn quad cable cleats are metallic cable cleats which have been designed, constructed, and tested in accordance with the International Standard 'cable cleats for Electrical Installations' IEC 61914 to ensure the securing and retention of cables, without sustaining damage to the cable.

The range is fabricated from 316L stainless steel, giving it high creep strength whilst providing excellent corrosion resistance in the harshest of environments. Designed for Quad application / formation.

The cleat has three M10 fixing clearance holes within one base allowing versatility to the installer during installation, and is designed to enable the product to be secured to a variety of mounting surfaces. The pre formed cleat opens fully allowing the cables to be easily placed within the cable cleat to aid the installer before closing and securing via the mouth bolt.

Liners come as standard which help to restrain the cable(s) within vertical applications. Where thermal elongation of cables occurs, the liner also provides a layer of protection between the cable sheath and the cable cleat during normal operation. This additional layer protects the cable from chafing on any mounting surface due to differential movements such as those found in marine and offshore applications. The liners also assist in the extra protection of cable(s) in the event of short circuit fault conditions. The standard liners supplied are classified as Low Smoke & Fume (LSF), Zero Halogen (LS0H) and Phosphorus Free.

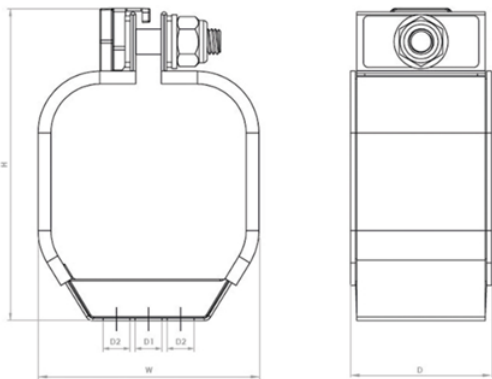
### Features:

- Third party certification to IEC 61914
- 316L stainless steel
- For quad formation / application
- Short circuit rating of 152kA peak fault
- Operating temperature -60°C to +60°C or -76°F to +140°F
- Liners are classified as Low Smoke & Fume (LSF),
- Zero Halogen (LS0H) and Phosphorus Free
- Combined single (M10) or 2 bolt (M10) fixing design

Short Circuit Testing to IEC 61914 - Clause 9.5			
Quad Formation			
One Short Circuit 300mm Fixed Cleat Centres	Two Shor Circuits 300mm Fixed Cleat Centres	Two Short Circuit 600mm Fixed Cleat Centres	One Short Circuit 300mm Fixed Cleat Centres
0.1 sec	0.1 sec	0.1 sec	1 sec
152kA Peak	139kA Peak	103kA Peak	82kA Peak
69.1kA r.m.s	62.7kA r.m.s	49.0kA r.m.s	40.2kA r.m.s

# SPECIFICATION DATA

Batt Part No.	CMP Reference	Cable OD Range: (4 x)	Dimensions (mm)			Fixing Hole Ø		Weight (g)
			Width	Height	Depth	D1	D2	
-	QSDSS016020	16-20mm	63	87	58	1 x M10	N/A	300
90172	QSDSS019023	19-23mm	56	93	58	1 x M10	N/A	309
90174	QSDSS021027	21-27mm	64	101	58	1 x M10	N/A	334
90175	QSDSS026031	26-31mm	72	109	58	1 x M10	N/A	352
90176	QSDSS030034	30-34mm	78	115	58	1 x M10	N/A	364
90178	QSDSS033037	33-37mm	84	121	55	1 x M10	2 x M10	338
90179	QSDSS036040	36-40mm	90	127	55	1 x M10	2 x M10	349
90181	QSDSS039043	39-43mm	96	133	55	1 x M10	2 x M10	354
90182	QSDSS041045	41-45mm	100	137	55	1 x M10	2 x M10	366
90183	QSDSS044047	44-47mm	104	140	55	1 x M10	2 x M10	382
90184	QSDSS046051	46-51mm	110	147	55	1 x M10	2 x M10	429
-	QSDSS049053	49-53mm	116	153	55	1 x M10	2 x M10	437
-	QSDSS052056	52-56mm	122	159	55	1 x M10	2 x M10	452
-	QSDSS055059	55-59mm	128	165	55	1 x M10	2 x M10	467
-	QSDSS058062	58-62mm	134	171	55	1 x M10	2 x M10	479
-	QSDSS061065	61-65mm	140	177	55	1 x M10	2 x M10	495
-	QSDSS064068	64-68mm	146	183	55	1 x M10	2 x M10	512
-	QSDSS067071	67-71mm	152	189	55	1 x M10	2 x M10	525



The information in this datasheet is for guidance only and subject to change without liability. Images provided are representations; actual cable dimensions may vary due to manufacturing tolerances.

sales@battcables.com | www.batt.co.uk | 01322 441165

©2024 Batt Cables Limited

