

CW LSF BRASS ECONOMY GLANDS

CW brass glands for use with SWA LSZH cables. Used in indoor and outdoor applications.

Standards:

- BS6121: Part 1: 2005. BSEN50252

Kit contents:

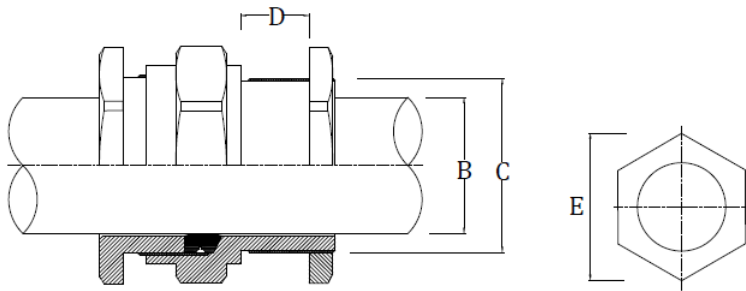
- Gland with Neoprene/Nylon Ring Gasket
- Locknut
- Earth Tag
- LSF Shroud (*PVC Shroud version also available*)

Additional Accessories available (upon request):

- Nylon Washers
- Fibre Washers
- Serrated Washers

SPECIFICATION DATA

Batt Part No.	Gland Size	Metric Thread	Min. Thread Length (mm)	Cable Diameter (mm) "B"		Armour Wire Diameter	Max Across Corners (mm)
		"C"	"D"	Min	Max	(mm)	"E"
-	20s/16mm	M20	15	6.0	13.4	0.90	24.4
88596	20s	M20	10	9.5	15.9	0.9/1.25	26.6
88600	20mm	M20	10	12.5	20.9	0.9/1.25	33.3
88601	25mm	M25	10	17.0	26.2	1.25/2.60	40.5
88628	32mm	M32	10	22.9	33.9	1.60/2.00	51.0
88901	40mm	M40	15	26.0	40.4	1.60/2.00	61.0
88922	50s	M50	15	35.0	46.7	2.00/2.50	66.5
88902	50mm	M50	15	38.0	53.1	2.00/2.50	77.7
88923	63s	M63	15	45.6	59.4	2.50	83.2
88903	63mm	M63	15	54.6	65.9	2.50	88.7
-	75s	M75	15	57.0	72.1	2.50	101.6
88904	75mm	M75	15	60.4	78.5	2.50/3.15	111.1
-	90mm	M90	15	69.2	90.4	3.15	128.6



The information in this datasheet is for guidance only and subject to change without liability. Images provided are representations; actual cable dimensions may vary due to manufacturing tolerances.

www.battcables.com | 01322 441165

©2024 Batt Cables Limited

