

## CW BRASS ECONOMY GLANDS

CW brass glands for use with SWA cables (Aluminium version also available for AWA cables). Used in indoor and outdoor applications.

### Standards:

- BS6121: Part 1: 2005. BSEN50252

### Kit contents:

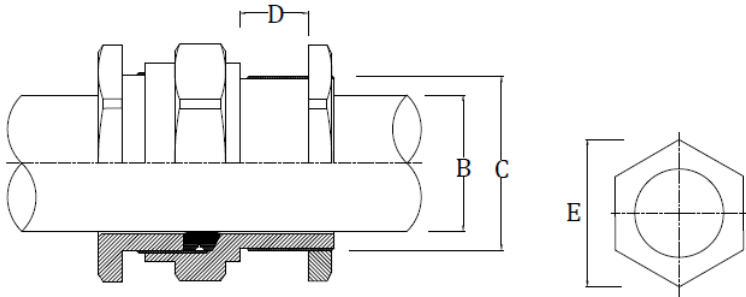
- Gland with Neoprene/Nylon Ring Gasket
- Locknut
- Earth Tag
- PVC Shroud (*LSF Shroud version also available*)

### Additional Accessories available (upon request):

- Nylon Washers
- Fibre Washers
- Serrated Washers

# SPECIFICATION DATA

Batt Part No.	Gland Size	Metric Thread	Min. Thread Length (mm)	Cable Diameter (mm) "B"		Armour Wire Diameter	Max Across Corners (mm)
		"C"	"D"	Min	Max	(mm)	"E"
-	20s/16mm	M20	15mm	6.0	13.4	0.9	24.4
88591	20s	M20	10mm	9.5	15.9	0.9/1.25	26.6
88592	20mm	M20	10mm	12.5	20.9	0.9/1.25	33.3
88593	25mm	M25	10mm	17.0	26.2	1.25/1.60	40.5
88594	32mm	M32	10mm	22.9	33.9	1.60/2.00	51.0
88893	40mm	M40	15mm	26.0	40.4	1.60/2.00	61.0
88919	50s	M50	15mm	35.0	46.7	2.00/2.50	66.5
88894	50mm	M50	15mm	38.0	53.1	2.00/2.50	77.7
88918	63s	M63	15mm	45.6	59.4	2.50	83.2
88895	63mm	M63	15mm	54.6	65.9	2.50	88.7
-	75s	M75	15mm	57.0	72.1	2.50	101.6
88896	75mm	M75	15mm	60.4	78.5	2.50/3.15	111.1
-	90mm	M90	15mm	69.2	90.4	3.15	128.6



The information in this datasheet is for guidance only and subject to change without liability. Images provided are representations; actual cable dimensions may vary due to manufacturing tolerances.

[www.battcables.com](http://www.battcables.com) | 01322 441165

©2024 Batt Cables Limited

