

## CW ALUMINIUM ECONOMY GLANDS

CW aluminium glands for use with AWA cables (Brass version also available for SWA cables). Used in indoor and outdoor applications.

### Standards:

- BS6121: Part 1: 2005. BSEN50252

### Kit contents:

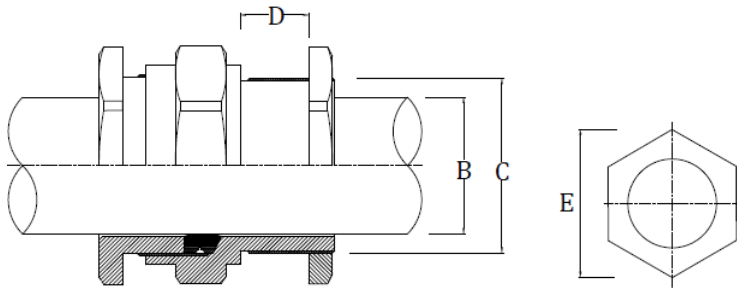
- Gland with Neoprene/Nylon Ring Gasket
- Locknut
- Earth Tag
- PVC Shroud

### Additional Accessories available (upon request):

- Nylon Washers
- Fibre Washers
- Serrated Washers

# SPECIFICATION DATA

Batt Part No.	Gland Size	Metric Thread	Min. Thread Length (mm)	Cable Diameter (mm) "B"		Armour Wire Diameter	Max Across Corners (mm)
		"C"	"D"	Min	Max	(mm)	"E"
84438	20mm	M20	10	12.5	20.9	0.9/1.25	33.3
84439	25mm	M25	10	17.0	26.2	1.25/1.60	40.5
84434	32mm	M32	10	22.9	33.9	1.60/2.00	51.0
84435	40mm	M40	15	26.0	40.4	1.60/2.00	61.0
84436	50s	M50	15	35.0	46.7	2.00/2.50	66.5
84437	50mm	M50	15	38.0	53.1	2.00/2.50	77.7
84146	63s	M63	15	45.6	59.4	2.50	83.2
84148	63mm	M63	15	54.6	65.9	2.50	88.7



The information in this datasheet is for guidance only and subject to change without liability. Images provided are representations; actual cable dimensions may vary due to manufacturing tolerances.

[www.battcables.com](http://www.battcables.com) | 01322 441165

©2024 Batt Cables Limited

