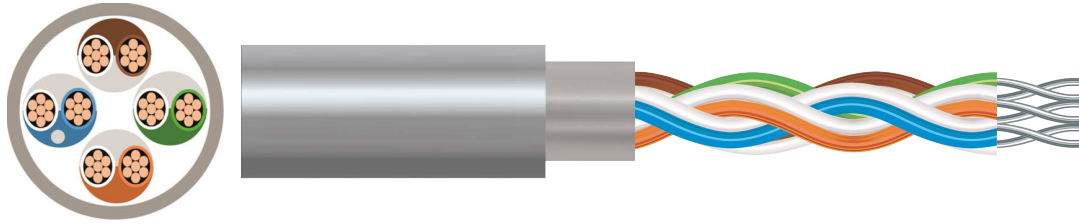


## BELDEN ALTERNATIVE - 95 RANGE



Belden Alternative power cables serve as the foundation for industrial setups, facilitating signal and power transmission within cable trays and enclosures. These cables adhere to rigorous standards, ensuring high-speed and high-quality end-to-end data transmission across various communication technology applications. They cover a wide range of industries including automation & process control, power generation, and data centres. With a focus on meeting Electronic Industries Alliance (EIA) standards, Belden equivalent cables are engineered to support high-speed data transmission, offering scalability to accommodate different project sizes. Reliable data transmission is crucial for businesses, underscoring the importance of installing top-quality cables for seamless operations.

<b>CONDUCTOR</b>	Tinned Copper
<b>STRANDING</b>	Class 2
<b>INSULATION</b>	PVC
<b>COLLECTIVE SCREEN</b>	Collective Aluminium Mylar
<b>OUTERSHEATH</b>	PVC
<b>OUTERSHEATH COLOUR</b>	Grey
<b>RATED VOLTAGE</b>	300V
<b>CORE IDENTIFICATION</b>	Pair 1: Black, Red Pair 2: Black, White Pair 3: Black, Green Pair 4: Black, Blue Pair 5: Black, Yellow Pair 6: Black, Brown Pair 7: Black, Orange Pair 8: Red, White Pair 9: Red, Green Pair 10: Red, Blue Pair 11: Red, Yellow Pair 12: Red, Brown Pair 13: Red, Orange Pair 14: Green, White Pair 15: Green, Blue Pair 16: Green, Yellow Pair 17: Green, Brown Pair 18: Green, Orange Pair 19: White, Blue Pair 20: White, Yellow Pair 21: White, Brown Pair 22: White, Orange Pair 23: Blue, Yellow Pair 24: Blue, Brown Pair 25: Blue, Orange
<b>OPERATING TEMPERATURE</b>	-30°C to +80°C

# SPECIFICATION DATA

BATT Part No	Belden Reference	No. of Pairs	AWG No. of strands	Approx overall diameter	Weight
91069	9533	3 Core	24 AWG	4.1	19
91025	9534	4 Core	24 AWG	4.7	22
91054	9535	5 Core	24 AWG	4.8	26
91027	9538	8 Core	24 AWG	5.7	36
91028	9540	10 Core	24 AWG	6.2	44
91058	9541	15 Core	24 AWG	7.2	64
91017	9501	1 Pair	24 AWG	4	21
91018	9502	2 Pair	24 AWG	5.6	34
91019	9503	3 Pair	24 AWG	5.9	45
91020	9504	4 Pair	24 AWG	6.7	54
91095	9505	5 Pair	24 AWG	7.3	73
91021	9506	6 Pair	24 AWG	7.3	78
91055	9509	9 Pair	24 AWG	8.5	111
91024	9525	25 Pair	24 AWG	13	252

The information in this datasheet is for guidance only and subject to change without liability. Images provided are representations; actual cable dimensions may vary due to manufacturing tolerances.

[www.battcables.com](http://www.battcables.com) | 01322 441165

©2024 Batt Cables Limited

