
ALUMINIUM SINGLE BOLT CLEATS

Two-piece single fixing design aluminium alloy cleat.

Features:

- Can be staked to a maximum of three-on-one fixing.
- Operating temperature -60°C to + 105°C
- Can be used for all types of cable routes.
- Plain finish for normal industrial areas or outdoor unpolluted areas.
- LUL approved product register ID 1959.

SPECIFICATION DATA

Batt Part No.	Cleat Reference	Cable Diameter		Dimensions (mm)				Weight	Stud Size
		Min	Max	B	C	D	E	(g)	
90514	370BA01	10	13	21	38	46	16	60	M10
90383	370BA02	13	16	21	38	46	16	50	M10
90186	370BA03	16	19	24	41	46	18	60	M10
90187	370BA04	19	22	27	44	46	19	70	M10
90071	370BA05	22	25	30	48	46	21	80	M10
90098	370BA06	25	32	37	54	46	24	90	M10
90100	370BA07	32	38	43	60	46	27	110	M10
90101	370BA08	38	44	49	67	46	30	120	M10
90102	370BA09	44	51	56	73	46	34	150	M10

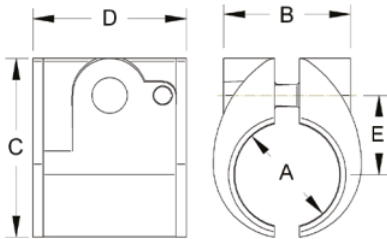
Method of Fixing:

- In all applications the cleats should be mounted on suitable M10 fixings (can be requested on demand).
- When mounting directly on channels, an adaptor plate should be used (can be requested on demand).

Performance Data

Test Standard	EN 50368:2003
Type	6.1.1 Metallic
Impact Resistance	6.2.5 V. Heavy
Lateral Load	3.7 -> 8.2 kN
Axial Load	1.332 -> 5.855 kN
Needle Flame	>120 secs

**Technical information can be subject to change without notice*



The information in this datasheet is for guidance only and subject to change without liability. Images provided are representations; actual cable dimensions may vary due to manufacturing tolerances.

www.battcables.com | 01322 441165

©2024 Batt Cables Limited

